



Quality Tools & Controls

Polaris®

APPLICATIONS

Table of Contents

Introduction

Intro to Cables	5
Bulk Cable, Cable Fittings and Cable Fittings Kit	6
Intro to Carburetor Caps	6
Universal Cables	7
Intro to Throttles and Throttle Kits	8
Intro to Throttles and Throttle Sleeves	9
Intro to Levers, Off-Road and Street	10 - 11

Cable Applications

Black Vinyl	12 - 13
Black Vinyl Special Off-Road	13

Control Applications

Twist Throttles, Cables for Throttles and Throttle Sleeves

Twist Throttle Kits	14 - 15
Cables for Vortex™ Throttle	16
Cables for Turbo™ Throttle	17
Cables for CR Competition™	18
Cables for CR Pro™ Throttles	18
Cables for Agricultural (AG) Throttle	18

What's in a Name?

What's in a Name?	19
-------------------	----

Terms of Business:

Motion Pro sells to authorized powersports distributors, powersports dealers, specialty manufacturers and retail consumers. We encourage retail consumers to purchase our products from their local powersports dealer where they can see an item before purchasing it, obtain necessary technical advice and information, save shipping charges, and obtain additional services that we cannot offer. We encourage powersports dealers to buy our products from one of our authorized distributors to get the lowest pricing and best terms. Our terms of sale to powersports dealers and retail consumers are FOB San Carlos, California and payment must be made by credit card or money order. We do not issue refunds or accept returns except in case of warranty where we have chosen to issue a refund instead of repair or replacement. Please call us if you cannot find the product you are looking for at your local dealer or favorite distributor.

We accept orders by mail, email, telephone or fax from authorized account holders. Our staff is available during regular business hours (pacific standard time) to answer your technical questions or special application needs. For more information contact your dealer, visit us at www.motionpro.com or give us a call and one of our sales representatives will be happy to answer any questions you may have. Our office hours are 8:00am to 5:00pm PST, Monday through Friday.

Part Numbering:

All Motion Pro cables are individually packed in poly sleeves with a color-coded header card. Each color represents a specific brand or type of cable. Our part number and the type of cable is printed on each header card. In addition, the Motion Pro part number is embossed on each cable to ensure positive identification.

Returns:

Warranty claims must be made directly to Motion Pro, Inc. Please call the Motion Pro Warranty Department during regular business hours (M-F, 8-5 pm, PST) to obtain an RGA number before you return any product to Motion Pro. We will not accept product that is returned without a Motion Pro issued RGA number. After you obtain an RGA number, send the item along with a copy of your purchase receipt to Motion Pro Warranty Dept., 867 American Street, San Carlos, CA 94070. The RGA number must be clearly marked on the outside of the package. Please include a brief description of the problem, your full name, company name, address, and telephone number and email address. We cannot process warranty claims that are made with incomplete information or without a valid RGA number or purchase receipt. Warranties on Motion Pro products are applicable to the original purchaser only and are not transferable. Claimant is responsible for all freight charges to return product to Motion Pro. If upon inspection we find that the product was covered under the Motion Pro warranty for that product we will, at our choice, either repair or replace the item at no charge, freight prepaid. Unless specifically requested, we will not return product sent to us if we determine that the product is no longer covered under the applicable warranty or the damage was due to abuse or neglect. Claimant is responsible for freight charges to return product to claimant that is not covered under warranty.

Motion Pro warranties are limited; see the "Warranty Limitations" for further information.

Warranty Limitations:

As to products where Motion Pro, Inc. is not the manufacturer, Motion Pro, Inc. grants no warranties whatsoever, whether express or implied or statutory, including without limitation, the implied warranties of merchantability and fitness for a particular purpose. The customers' sole remedy is specifically limited to the warranties, if any, granted by the manufacturer of the product. As to product, if any, where Motion Pro, Inc. is the manufacturer, Motion Pro, Inc. guarantees said products for one year from the date of purchase by the customer against defects in materials and workmanship only, and that guarantee is limited to the repair or replacement of that product only. Repair or replacement of any part is subject to Motion Pro, Inc. determining that the part is in fact defective and that the part was not subjected to abuse or excessive use and was properly installed, serviced and maintained. The above is customer's exclusive remedy. The above is expressly in lieu of all warranties express or implied and of all other obligations or liabilities. In no event shall Motion Pro, Inc. be liable for any incidental or consequential damages arising from the breach of any warranties, improper installation, the failure to deliver, delay in delivery, delivery of non-conforming parts, or any other breach of contract or duty. There are no warranties, express or implied, including any warranty of merchantability and fitness for a particular purpose, which extend beyond the face of this statement.

Back Orders:

All back orders should be confirmed directly with your distributor.

Motion Pro® Inc.

Reserves the right to change any and all prices without notice.

Brand Names: The names of Harley-Davidson, Honda, Kawasaki, KTM, Suzuki, Yamaha, Arctic Cat, Polaris, Bombardier, Can-Am and other brands, as well as part numbers are used as a reference only. Our intention is that our products can be used on your customers brand-name vehicles. No products in our catalog are made by or with the permission of Harley-Davidson, Honda, Kawasaki, KTM, Suzuki, Yamaha or any other company that manufactures a vehicle our parts may be used on.

Copyright 2007

Motion Pro®, Inc.: This catalog and any supplement (including photos, line art, product descriptions, and manner of presentation), are the property of Motion Pro®, Inc. and may not be copied or reproduced without the express written permission of Motion Pro®, Inc.

Trademark:

Motion Pro® is a registered trademark. Any reproduction of the name or likeness without the express written permission of Motion Pro, Inc. is prohibited.

About This Catalog

We completely reorganized our applications catalog in an effort to give you a book that is easier to use, more complete, and one that you can easily update when we publish new information.

Not every dealer carries product for every brand of vehicle so we separated out each brand of vehicle and now publish separate books for each brand.

Within each Model Group we organized applications by product category (Black Vinyl Cables, Armor Coat Cables, Levers, Etc.). Within each product category the applications are listed by displacement and then alphabetically by model and year.

We will update this catalog various times during the year as new applications become available and post the updated catalog on our web site for easy downloading. We will note on our web site which pages have changed so you can either print out the entire catalog or just those pages that have been updated.

We recommend that you place each page in a sheet protector and then put them in a three ring binder. We recommend the Avery® Heavyweight Presentation Sheet Protectors for this purpose [available from your local office supply store].

Thank you for using Motion Pro products.

Cables

Motion Pro® Standard Black Vinyl Cables

Our standard replacement black vinyl cables meet or exceed O.E. quality. Black Vinyl cables feature a rolled tempered-steel wire housing made to exact inner and outer specifications to insure correct clearances for the inner wire. All cables have an inner nylon sleeve for longer life and smooth operation. Motion Pro® uses the terminology "coil wound" (CW) to describe the standard type of cable housing.

Motion Pro® Armor Coat Braided Stainless Steel Cables

Dress your bike up with a set of Motion Pro®, Armor Coat Braided Stainless Steel Cables. Armor Coat cables feature a crystal-clear protective coating to protect the finish on your motorcycle and preserve the radiance of the braided stainless steel cables. Extensively tested to resist the effects of the sun's UV rays.

Motion Pro® T2 Motocross Cables

Motion Pro T2 cables are our very best cables. All our T2 cables feature a Polyethylene (PE) liner for smooth operation and durability. Motion Pro T2 cables have proven their superiority in the demanding sports of Supercross, MX, enduro, and dirt track racing.

T2 throttle cables feature rolled tempered-steel coil wound (CW) housing with 1.5mm or 1.2 mm inner wire for strength and durability.

Our T2 clutch cables feature longitudinally wound (LW) housing. Clutch cables are subject to very heavy loads and the (LW) housing used in our T2 cables resists compression under heavy loads to deliver a precise, positive, non-mushy feel for enhanced performance.

All our cables are manufactured for specific models to insure perfect fitment. Complete cable kits are available for most popular MX and Offroad bikes.



What is Longitudinally Wound Housing (LW)

- Longitudinally wound housing will not compress and feel mushy under heavy loads.
- (LW) cables deliver a precise, positive feel for enhanced performance.
- PE Liner for durability and smoothness
- All our cables are manufactured for specific models to insure perfect fitment.



Longitudinally Wound Housing (LW)



Coil Wound Housing (CW)

Motion Pro® T2 Gray Sportbike Cables

Motion Pro® knows that precision control is required for racing today's advanced and remarkably fast Sportbikes. Our T2 series of cables for Sportbikes are the latest addition to our growing line of performance cables. This is the same program that was successfully introduced and embraced in the demanding sports of Motocross, Supercross, and Off-road racing. The overwhelming success of the T2 series of cables for Off-road racing applications inspired the development of the T2 series of cables for Sportbikes. T2 clutch cables for Sportbikes are gray and feature our "longitudinally-wound" (LW) housing which resists housing compression and results in a precise and easy to operate clutch. Roadrace testing confirms that today's Sportbikes with large displacement motors and high performance clutches can increase their clutch control by eliminating the "spongy" clutch lever feel and imprecise engagement that standard OEM coil-wound cables provide.



Bulk Cable

Galvanized Wire

- 01-1025 Inner Wire 1.2mm (.050") 7x7 100'
- 01-0100 Inner Wire 1.5mm (.060") 7x7 100'
- 01-0101 Inner Wire 2.0mm (.080") 1x19 100'
- 01-0102 Inner Wire 2.5mm (.100") 1x19 100'
- 01-0106 Inner Wire 1.5mm 55" 7 x 7 Top = Ball, Bottom = Carb Nipple
- 01-0108 Inner Wire 2.0mm 65" 8 x 10 Top (only) = Barrel
- 01-0111 Universal Throttle Wire 1.2mm 60.5" 7 x 7 Top = Ball

Nylon Lined Housing

- 01-0104 Black Housing 5mm 50' (For 1.5mm wire)
- 01-0105 Black Housing 6mm 50' (For 2.0mm wire)
- 01-0103 Black Housing 7mm 50' (For 2.5mm wire)
- 01-0118 Gray Housing 5mm 50' (For 1.2mm wire)
- 01-0119 Gray Housing 6mm 50' (For 1.5mm wire)
- 01-0120 Gray Housing 7mm 50' (For 2.5mm wire)

Cable Fittings

(Fittings sold in packs of 10)

- | | |
|---|--|
| <ul style="list-style-type: none"> 01-0000 (A) Ball, Throttle Nipple 7/32 for 1.5mm wire 01-0001 (B) Throttle Nipple, Carb End for 1.5mm wire 01-0002 (C) Barrel Nipple 3/8 for 2mm wire 01-0003 (C) Barrel Nipple 5/16 for 2mm wire 01-0004 (D) Cable Housing End 6mm (for 5mm housing) 01-0005 (D) Cable Housing End 7mm (for 6mm housing) 01-0006 (D) Cable Housing End 8mm (for 7mm housing) 01-0007 (E) Pear Nipple (clutch lower) for 2.0mm wire 01-0008 (E) Pear Nipple (clutch lower) for 2.5mm wire 01-0009 (C) Barrel Nipple 5/16 for 2.5mm wire 01-0010 (F) Barrel Nipple 6 X 10mm for 1.5mm wire 01-0011 (F) Barrel Nipple 6 x 7mm for 1.5mm wire | <ul style="list-style-type: none"> 01-0012 (B) Throttle Nipple (short), Carb End, for 1.5mm wire 01-0013 (G) Cable Adjuster Screw, Mikuni carb top 01-0014 (H) Cable Angle Screw, Mikuni carb top 01-0015 (I) Mid Adjuster, 5mm housing 01-0016 Mid Adjuster, 6mm housing (not pictured) 01-0018 Screw-in Adapter for universal cable to Honda CR-type throttle (sold ea. ,not pictured) 01-0019 (K) Carb Top Adapter, Adapts 01-0013 to late-type Honda carb (sold each) 01-0024 (J) Clutch/Front Brake Cable Adjuster, 8mm (sold each) 01-0025 Clutch/Front Brake Cable Adjuster, 9mm (sold each ,not pictured) 01-0026 (L) Mikuni Carb Idle Screw (sold each) 01-0028 (M) Rubber Boot used to cover 01-0013 Mikuni Carb Top Adjuster (sold each) |
|---|--|



01-0014 (H)
Cable Angle Screw, Mukuni carb top



01-0024 (J)
Clutch/FrBrk Cable Adjuster



01-0026 (L)
Mikuni Carb Idle Screw



01-0028 (M)
Rubber Boot

Cable Fittings Kit

01-0055



All in an 18-Compartment Box with label

This is a handy shop kit with the 14 of the most commonly used cable fittings. All fittings can be reordered as individual packets as listed below.

Qty.	Part #	Qty.	Part #
(20)	01-0000	(10)	01-0007
(20)	01-0001	(10)	01-0008
(10)	01-0002	(10)	01-0009
(20)	01-0003	(10)	01-0010
(20)	01-0004	(10)	01-0011
(20)	01-0005	(10)	01-0012
(20)	01-0006	(5)	01-0015



01-0000 (A) Ball-End
01-0007 (E) Pear Nipple
01-0008 (E) Pear Nipple



01-0012 (B) Carb Nipple Short
01-0001 (B) Carb Nipple Long



01-0011 (F) Barrel
01-0010 (F) Barrel



01-0002 (C) Barrel Nipple
01-0003 (C) Barrel Nipple
01-0009 (C) Barrel Nipple



01-0004 (D) Cap Housing End
01-0005 (D) Cap Housing End
01-0006 (D) Cap Housing End



01-0015 (I) Mid Adjuster

Carburetor Caps

Starting with the 1986 models, Honda changed the carburetor cap on some ATV models to incorporate an internal snap ring to lock the cable in place. O.E. Honda cables for these models include the cap with the cable. Once the cable is inserted into the cap, it cannot be removed. The snap ring in the cap clamps onto the square groove in the cable ferrule and it becomes one part. Motion Pro cables also includes the cap with these cables. Motion Pro adapter part number 01-0019 will allow the use of the earlier model Honda cables with 01-0013 adjuster.

Keihin Carburetor Caps

- 01-0020 **Keihin PE 20/24mm carburetors** 25mm cap I.D.
Fits: ATC 110/125/185/200, 1986 and later
- 01-0021 **Keihin PJ 34/36mm carburetors** 43mm cap I.D.
Fits: ATC250R & TRX250R models
- 01-0022 **Keihin PE 26/28mm carburetors** 30mm cap I.D.
Fits: ATC200X, 86-87 models
- 01-0033 **Keihin 13mm carburetors**
Fits: XR50 & CRF50, 00-03 models



01-0022 Keihin Cap

Mikuni Carburetor Caps

- 01-0023 Standard type cap for most Mikuni VM 26-34mm carbs
Used in some Motion Pro Yamaha throttle kits



01-0023 Mikuni Cap



01-0013 (G) Adjuster



01-0019 (K) Adapter

Universal Use Throttle Cables

Motion Pro Part #	Throttle	Fits Carb	Used in Kit #	Housing Length	Application
01-0241	MAGURA 306	Mikuni 24-28, Keihin PJ 34-38		41.5"	Many Dirt Bikes & ATV's
01-0405	MAGURA 306	Mikuni VM 34-38/TM 36-38, Bing 36-38, Keihin PE 36-38		45.875"	Many Dirt Bikes & ATV's
01-0200	MAGURA 311	Mikuni 36-38, Bing OR Keihin round slide	01-0309	36.375"	Many Dirt Bikes & ATV's
01-0201	01-0057	36-38 Bing 54		40.625"	Many Dirt Bikes & ATV's
01-0406	01-0053/01-0056	Mikuni TM 28-34, Keihin PJ 34-38/PWK 28-39		42"	Many Dirt Bikes & ATV's
01-0411	01-0057	Mikuni TM 28-34, Keihin PJ 34-38/PWK 28-39		41"	Many Dirt Bikes & ATV's
01-0408	01-0060	Mikuni TM 28-34, Keihin PJ 34-38/PWK 28-39		40.75"	Many Dirt Bikes & ATV's
01-0407	01-0053/01-0056	Mikuni TMS/TMX 35-38/TM 36-38/ VM 32-38, Keihin PE 36-38		42"	Many Dirt Bikes & ATV's
01-0409	01-0057	Mikuni TMS/TMX 35-38/TM 36-38/ VM 32-38, Keihin PE 36-39		40.5"	Many Dirt Bikes & ATV's
01-0410	01-0060	Mikuni TMS/TMX 35-38/TM 36-38/ VM 32-38, Keihin PE 36-40		44.625"	Many Dirt Bikes & ATV's
01-0249	01-0057	Mikuni TM 28-34, Keihin PJ 34-38/PWK 28-39	01-0305	44.25"	Many Dirt Bikes & ATV's
01-0249	01-0060	Mikuni VM34-38/TM 38/TMS 35-38, Keihin PE 36-38, Dellorto R/S		44.25"	Many Dirt Bikes & ATV's
01-0807	01-0053/01-0056	Mikuni TM 28-34/VM 34, Keihin PJ 34-38 /PWK 28-39, Lectron 36-38		39.875"	Many Dirt Bikes & ATV's
01-0227	01-0057	Mikuni TM 28-34/VM 34, Keihin PJ 34-38 /PWK 28-39, Lectron 36-38		42"	Many Dirt Bikes & ATV's
01-0817	01-0060	Mikuni TM 28-34/VM 34, Keihin PJ 34-38 /PWK 28-39, Lectron 36-38		39.75"	Many Dirt Bikes & ATV's
01-0671	01-0057	Mikuni TMS/TMX 35-38/TM 36-38		39.75"	Many Dirt Bikes & ATV's, Elbow Carb End
01-0829	01-0060	VM 32-38, Keihin PE 36-38		39.75"	Many Dirt Bikes & ATV's, Elbow Carb End
01-0820	01-0057	Mikuni VM 40-44		39.75"	Many Dirt Bikes & ATV's, Elbow Carb End
01-0819	01-0060	Mikuni VM 40-44		42"	Many Dirt Bikes & ATV's, Elbow Carb End
01-0728	01-0054	Keihin PJ 34-38,PWK 28-39, Mikuni TM28-34		40"	Many Dirt Bikes & ATV's, Elbow Carb End
10-0000	01-0057	Mikuni VM 34-38		34.625"	All Husquarna with listed carbs
05-0317	01-0073	Mikuni HS 40		34.625"	Many 4-Stroke singles
01-0233	01-0058	Mikuni smooth bore	01-0316	32.5"	Pull - for use W / Mikuni Smooth bore kit
01-0234	01-0058	Mikuni smooth bore	01-0316	32.5"	Push - for use W / Mikuni Smooth bore kit
01-0402	01-0073	Mikuni smooth bore	01-0362	32"	Push - Pull - use W/ Mikuni Smooth bore kit
10-0011	01-0060	Bing 38-40		40.5"	Many vintage applications such as CZ, Maico and Husqvarna
10-0011	01-0057	Mikuni VM 36-38		40.5"	using MP Turbo throttle or Gunner Gasser Whirl-Pull

Universal Use Kits

Fits Carb	Throttle Kit #	Cable	Throttle
Models W/34/40mm E.I., Dellorto, Electron, or 32-38mm Mikuni	01-0303	10-0001	01-0060
Most MX bikes W/Mikuni 36-38mm round slide	01-0308	01-0409	01-0057
ATV W/36-38 Bing/ Keihin/Mikuni carb	01-0309	01-0200	01-0060
Models W/Mikuni smooth bore conv. kit	01-0316	01-0233/01-0234	01-0058
Models W/Mikuni smooth bore conv. kit	01-0362	01-0402	01-0073

Universal Use Throttle Cables

Motion Pro Part #	Throttle	Housing Length	Free Length	Housing size	Top Fitting	Bottom Fitting
01-0106	Inner wire only. Cut off the end not needed. 1.5mm X 55"	---	---	---	BALL	CARB NIPPLE
01-0110	Adjuster; 90 degree elbow carb end	42.5"	6.1"	6mm	BALL	---
01-0202	Extra long all purpose mid adjuster Cut off end not needed	68"	4.4"	5mm	BALL	BBL
01-0203	Throttle or compression release. Ball top with mid adjuster.	40"	2.4"	5mm	BALL	---
01-0205	Solid nylon housing. Extremely light weight and smooth working.	46.3"	1.1"	5mm	BALL	CARB NIPPLE
	Housing may be trimmed with a knife to extend free length.					
01-0222	Solid nylon same as 01-0205 (above) but with mid adjuster.	46.3"	3.1"	5mm	BALL	CARB NIPPLE
01-0403	PUSH-0PULL SET. Use w/ 01-0073 thr.	42"	8.0"	6mm	BBL	---
01-0111	Inner wire only. 1.2mm X 60"	---	---	---	3/16" BALL	---

Universal Use Brake or Clutch Cables

Motion Pro Part #	Throttle	Housing Length	Free Length	Housing size	Top Fitting	Bottom Fitting
01-0108	Inner wire only. 2mm X 65"	---	---	---	BBL	---
01-0109	Inner wire only. 2mm X 72" (Brake)	---	---	---	---	6mm STUD
01-0204	2mm wire, 5/16" with 3/8" adapter top, loose lower.	60"	8.4"	6mm	BBL	---
01-0226	2.5mm wire, 5/16" with 3/8" adapter top, loose lower.	60.2"	8.4"	7mm	BBL	---
01-0423	Inner wire only. 2.5mm X 79"	---	---	---	5/16" BALL	---
07-0068	inner wire only, 3mm X 84.9"	---	---	---	"Harley Eye"	---

Universal Speedometer Cable Kits

01-0107 50" Speedo Cable Kit

01-0112 92" Speedo Cable Kit

- Offered in two lengths: 50" for standard applications and 92" for extended length applications
- Replaces most speedometer cable inner wire (0.125" dia.)
- Includes tips and tools to complete the procedure



Intro to Throttles & Throttle Kits

www.MotionPro.com

At Motion Pro, we never refer to our throttles by fractional names (1/4-turn, 1/2-turn or other any other “turns”). How far a throttle fractionally turns is a function of the throttle’s “rate” (how much cable inner wire the throttle’s drum or cam reels in for every degree of rotation) and the carb’s/throttle body’s travel (how much cable inner wire must be reeled in to fully open the carb(s) or throttle body(ies)). As an example, our fastest throttle, the Vortex, has a rate of 1.90 (the maximum number of degrees turned divided by the maximum travel in mm, 95°/50mm of wire travel). Since it has a maximum of 95° to turn, it will never be much more than a 1/4-turn throttle, but in any application requiring less than 50mm of travel, it will be less than 1/4-turn to fully open. If only 25mm of travel is required, it will be about a 1/8-turn throttle. The opposite of the Vortex is our CR Pro; our slowest single-pull throttle. It has a rate of 2.93, the result of a maximum of 170° turn and 58mm of travel. The rule of rates is simple; the smaller the value of the rate, the faster the throttle will open the carb.

Since we do not know the travel of your carb(s) or throttle body(ies), we will not quote a fractional turn. With careful measurement you can determine the approximate fractional turn required by a given carb and throttle by removing your existing throttle from your existing cable. Carefully measure the exposed inner wire (in millimeters) between the last fitting on the housing (the cap, elbow fitting, or threaded adjuster) and the wire end fitting (usually a ball or barrel). Do not include the wire end fitting in the measurement, only the exposed wire. Write down the measurement, it is your present “throttle free length.” Now pull the inner wire until the carb is fully open against the stop and repeat the measurement. Subtract the throttle free length from the measurement you have just taken; this figure is the carb’s “travel.” Refer to the “rate” of the throttle you are considering. Multiply your carb’s “travel” by the “rate” of the throttle. The result is the approximate number of degrees the throttle will turn to fully open the carb(s).

Notes: Do not consider any single-pull throttle (only one cable used) to replace any push / pull throttle (one pull cable and one return cable). WE WILL NOT build a custom cable to operate a push / pull carb with a single-pull throttle (including ATV thumb throttles). To fully open your carb, the throttle’s maximum travel must be greater than or equal to the carb’s travel or the carb will not fully open. In most cases, your present cable will not work with a throttle of a different rate. Even if the rates are similar, differences in internal design usually require a different free length (the amount of cable inner wire required to reach from the end of the cables housing and housing end fittings to the connection point on the throttle tube’s drum or cam). We calculate free length as a total figure, both the carb’s required free length and the throttle’s required free length are combined to determine the correct cable free length. This, in addition to the varied types of required housing end fittings, is the same reason you may require a special cable when you change your carb to a different size or type.

Part Number	Throttle	Max Twist°	Rate	Max Travel	Free Length	Adjuster Thread	Adjuster	Replacement Throttle Tube	Replacement Wheel	Replacement Mud Cover	Fastener Head
01-0054	VORTEX	95°	1.90	50	60 ¹	8x1.25	01-0024	01-0082	C1-054B	C1-054A	8mm Hex
01-0053	CR Pro	170°	2.93	58	45 ¹	10x1.25	01-0018	01-0087			4mm Allen
01-0056	CR Comp	190°	2.35	81	50 ¹	10x1.25	01-0018	01-0088			5mm Allen
01-0057	TURBO (Std.)	120°	2.30	52	90 ²	8x1	Incl.	01-0089			4mm Allen
	TURBO (w/ Opt. Tube)	150°	2.00	75	90 ²	8x1	Incl.	01-0072			4mm Allen
01-0060	Magura 314 mx	95°	1.90	50	70	None					Slot
	Magura 314 enduro	105°	2.10	50	70						
01-0058	Push/Pull Black	165°	3.67	45	T20/50l	Cable		01-0052			
01-0059	Push/Pull Chrome	165°	3.67	45	T20/50l	Cable		01-0052			
01-0073	Straight Push/Pull	109°	3.00	36	T34/49l	Cable	Cable	01-0090			5mm Allen

¹ All throttle F/L is measured at the end of the threaded adjuster inside the throttle housing. The threaded adjuster must be screwed all the way in, for use with 01-0024 add 10mm, ² F/L measured from cap, Rate = Twist° / mm Travel, Max travel is measured in millimeters (mm)



Motion Pro® is your source for ATV Twist Throttle Conversions!

We offer a wide range of kits for all different styles of ATVs including replacement cables for use with stock throttles and aftermarket carburetors.

We’ve also redesigned our packaging to make it easier to stock, easier to see what is included and more attractive. If you have any throttle kit questions, be sure to let us know; we’ll gladly answer any questions you might have.

Vortex™ throttle

Made from die-cast aluminum with a gray finish and gray rubber mud cover OEM-style replacement similar to most late model Japanese MX bikes. Fits KX125/250 92-04, RM125/250 95-04, YZ125 & 250 96-04, & WR250Z 97 with the stock throttle cables. For Honda CR125 93-02 & CR250 90-03, CR500 90-01, use with Motion Pro® Cable 01-0713. Available for many other models by using a Motion Pro® cable.

01-0054 Vortex Throttle
01-0082 Replacement Sleeve
C1-054A Replacement Mud Cover
C1-054B Replacement Wheel Kit

Included:
Rubber Mud Cover



Turbo™ throttle

Polished die-cast aluminum housing. Opens 28-38mm carburetors. Perfect ratio for off-road motorcycles or ATVs Comes complete with cable adjuster and dust boot. 4 1/2" hand grip. Same cable applications as the "Gasser/Whirlpull" type throttle. Optional nylon sleeve (01-0072) will fully open carburetors 40mm and larger.

01-0057 Turbo Throttle
01-0089 Replacement Sleeve
01-0072 Optional Nylon Sleeve

CR Competition™ throttle

Die-cast aluminum housing with a black epoxy finish. Opens 30-38mm carburetors. Throttle cable will clear brake master cylinder on handlebar. Uses 4 1/2" throttle sleeve with grip retaining ring. Early disk-brake Honda CR replacement. Motion Pro Cables available for most models.

01-0056 CR Competition™ Throttle
01-0088 Replacement Sleeve
01-0018 Cable Adjuster/ Adapter

CR Pro™ throttle

Die-cast aluminum housing with black epoxy finish. Straight-pull assembly. Recommended for 34mm or smaller straight-pull carburetors. 4 1/2" throttle sleeve with grip retaining ring. Drum Brake Honda CR replacement (pre-84). Motion Pro® cables available for most models

01-0053 CR Pro Black Throttle
01-0071 CR Pro Chrome Throttle
01-0087 Replacement Sleeve
01-0018 Cable Adjuster/ Adapter

New:
CR Pro Chrome
Throttle

Magura® 314 throttle

Reinforced polycarbonate housing. Adjustable turn ratio from MX to Enduro in minutes. Includes protective rubber cable boot. Opens 28-40mm carburetors. Ideal for off-road motorcycles or ATVs

01-0060 Magura 314 Throttle

Agricultural throttle

Identical in appearance to our CR Pro Throttle with addition of a set screw to hold the throttle position. Allows steady operation during very low speed agricultural use. Uses the same cables as CR Pro, does not use CR Pro replacement sleeve.

NOT FOR SPORT USE.

01-0063 Agricultural Use Throttle
01-0095 Replacement Sleeve
01-0096 Replacement Screw Kit

Throttle Sleeves

Replaces O.E.M. throttle sleeves
Heavy duty and exceeds the quality and durability of O.E.M. sleeves
Will not scar bars like aluminum sleeves
Nylon fabric composite material
Some models have pop-out end caps for use with bar-end-type hand guards
Molded ridges to help secure grips
One-piece tube and reel design



Off-Road & Street Levers

CONTROL LEVERS

Motion Pro® Levers are designed to exceed OEM specifications. We use brass bushings on many models for smooth operation and precise feel. We also offer forged clutch & brake levers with pivot bearings for MX/off-road applications. Built to resist breakage with great style and function. The carbon fiber style is available for many sport bike applications.

QUICK-ADJUST MX CLUTCH LEVER

- Quality 6061-T6 forged aluminum
- Quick-adjuster for on-the-fly adjustments
- Nylon mounting sleeve rotates on impact to protect lever
- Sealed roller bearing in pivot for effortless operation
- Fits all 7/8" bars
- CR ratio

14-0110 Quick-Adjust MX Clutch Lever



QUICK-ADJUST MX CLUTCH LEVER WITH HOT START LEVER

- Quality 6061-T6 forged aluminum
- Quick-adjuster for on-the-fly adjustments
- Roller bearing in pivot for effortless operation
- Fits all 7/8" bars
- CR ratio

14-0111 Quick-Adjust MX Clutch Lever with Hot Start



OE STYLE REPLACEMENT

- Meet or exceed OE quality
- Applications for most models
- Cast aluminum
- Brass pivot bushing in clutch lever pivot for smooth operation



MX FORGED LEVERS

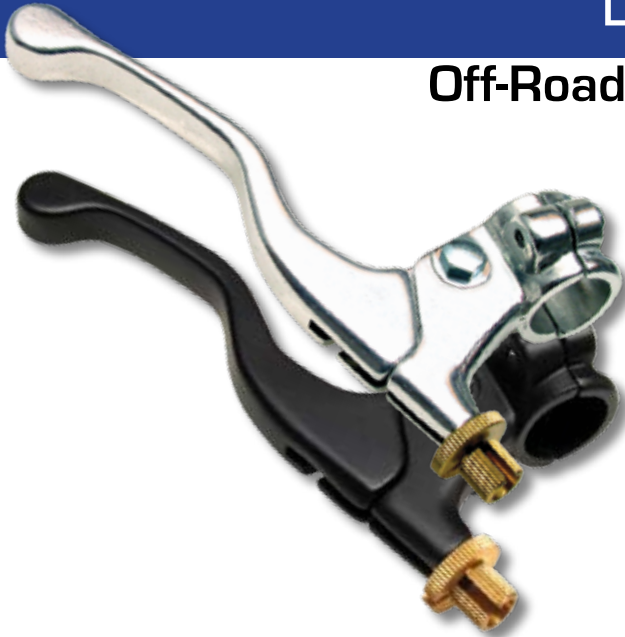
- Quality 6061-T6 forged aluminum for increased strength
- Roller bearing in clutch pivot for effortless operation
- Designed to fit OE perch
- Polished aluminum finish



Roller bearing in clutch pivot



Off-Road & Street Levers



LEVER & PERCH ASSEMBLIES

- Inexpensive replacement for Japanese MX bikes
- Available in black or polished finishes
- Not for use with hydraulic brakes or clutches

Polished

- 14-0102 Honda Clutch Lever Assembly
- 14-0103 Honda Front Cable-Type Brake Lever Assembly
- 14-0106 Kawasaki/Suzuki/Yamaha Clutch Lever Assembly
- 14-0107 Kawasaki/Suzuki/Yamaha Cable-Type Brake Lever Assembly

Black

- 14-0100 Honda Clutch Lever Assembly
- 14-0101 Honda Front Cable-Type Brake Lever Assembly
- 14-0104 Kawasaki/Suzuki/Yamaha Clutch Lever Assembly
- 14-0105 Kawasaki/Suzuki/Yamaha Cable-Type Brake Lever Assembly

OE STYLE REPLACEMENT

- Meet or exceed OE quality
- Applications for most models
- Cast aluminum
- Brass bushing in clutch pivot for smooth operation



CHROME WIDE BLADE LEVERS

- Applications for metric cruisers are available
- Meet or exceed OE quality
- Cast aluminum
- High luster chrome finish



CARBON FIBER STYLE WIDE BLADE LEVERS

- Applications for sportbikes are available
- Meet or exceed OE quality



CHROME WIDE BLADE SKULL-END LEVERS

- Applications for metric cruisers are available
- Meet or exceed OE quality
- Cast aluminum
- High luster chrome finish
- Unique skull design



Black Vinyl Cables

Model	CC	*Cable Length	Foot Note	Model Year	Throttle BV	Choke	Clutch LW	Model	CC	*Cable Length	Foot Note	Model Year	Throttle BV	Choke	Clutch LW
Worker 500 4x4	0500	Std		1999	10-0090	10-0089		Sportsman 700	0700	Std		2002 - 2006	10-0090	10-0088	
Worker 500 4x4	0500	Std		2001 - 2002	10-0090	10-0088		Sportsman 700 EFI	0700	Std		2004 - 2007	10-0107		
Xplorer 500 4x4	0500	Std		1997	10-0098	10-0053		Sportsman MV7	0700	Std		2005	10-0090	10-0088	
Sportsman 600	0600	Std		2003 - 2005	10-0090	10-0088		Sportsman 800 EFI	0800	Std		2005 - 2007	10-0107		

Black Vinyl Special - Off-Road Cables

Model	CC	Carb	Model Year	Throttle BV
Scrambler 400 4x4	0400	Mikuni TMX 38	1995	01-0693
Scrambler 400 4x4	0400	Mikuni TMX 38	1996	01-0694
Scrambler 400L 4x4	0400	Mikuni TMX 38	1997	01-0696
Sport 400L	0400	Mikuni TMX 38	1996	01-0695
Sport 400L	0400	Mikuni TMX 38	1997	01-0697

* Cable Length-number of inches + or -, **CC**- Displacement, **BV**- Black Vinyl, **LW**- Longitudinally Wound

Twist Throttle Kits

Model	CC	Carb	Foot Note	Model Year	Agri cultural	CR Comp	CR Pro	Turbo	Vortex
250 4x4	0250	Stock	001	1993	01-0529		01-0371	01-0392	
Big Boss 250 4x6	0250	Stock	001	1989 - 1990			01-0371	01-0392	
Big Boss 250 4x6	0250	Stock	001	1993	01-0529				
Big Boss 250 6x6	0250	Stock	001	1991 - 1993	01-0529		01-0371	01-0392	
Trail Blazer 250	0250	Stock		1990 - 1995	01-0529		01-0371	01-0392	
Trail Blazer 250	0250	Stock		1998	01-0529		01-0371	01-0392	
Trail Blazer 250	0250	Stock		1999 - 2006			01-0371	01-0392	
Trail Blazer 250ES	0250	Stock		1996 - 1997	01-0529		01-0371	01-0392	
Trail Boss 250	0250	Stock		1990 - 1992	01-0529		01-0371	01-0392	
Trail Boss 250	0250	Stock		1995 - 1999	01-0529		01-0371	01-0392	
Trail Boss 250 2x4	0250	Stock		1989	01-0529		01-2505	01-0392	
Trail Boss 250 2x4	0250	Stock		1990 - 1992	01-0529		01-0371	01-0392	
Trail Boss 250 4x4	0250	Stock	001	1989 - 1992	01-0529		01-0371	01-0392	
Xplorer 250 4x4	0250	Stock		2000	01-0529		01-0371	01-0392	
Xplorer 250 4x4	0250	Stock	002	2001 - 2002	01-0529		01-0371	01-0392	
300 4x4	0300	Stock	001	1994	01-0529		01-0371	01-0392	
300 6x6	0300	Stock	001	1994	01-0529		01-0371	01-0392	
Trail Boss 300 2x4	0300	Stock		1993 - 1995	01-0529		01-0371	01-0392	
Trail Boss 300 2x4	0300	Stock	001	1995	01-0529		01-0371	01-0392	
Xplorer 300 4x4	0300	Stock	001	1996 - 1999	01-0529		01-0371	01-0392	
Xpress 300 2x4	0300	Stock		1996 - 1999	01-0529		01-0371	01-0392	
Magnum 325 2x4	0325	Stock		2001	01-0584		01-0585		01-0586
Magnum 325 2x4	0325	Stock		2002	01-0581	01-0524	01-0571		01-0572
Magnum 325 2x4 HDS	0325	Stock	006	2000	01-0581	01-0524	01-0571		01-0572
Magnum 325 2x4 HDS	0325	Stock	007	2000	01-0584		01-0585		01-0586
Magnum 325 2x4 HDS	0325	Stock		2001	01-0584		01-0585		01-0586
Magnum 325 4x4	0325	Stock	002	2000 - 2002	01-0584		01-0585		01-0586
Magnum 325 4x4 HDS	0325	Stock	002	2000	01-0584		01-0585		01-0586
Magnum 325 4x4 HDS	0325	Stock		2001 - 2002	01-0581	01-0524	01-0571		01-0572
Trail Boss 325	0325	Stock		2000 - 2001	01-0584		01-0585		01-0586
Trail Boss 325	0325	Stock		2002	01-0581	01-0524	01-0571		01-0572
Trail Boss 325 SE 2x4	0325	Stock		2001	01-0584		01-0585		01-0586
Xpedition 325	0325	Stock	002	2000 - 2001	01-0584		01-0585		01-0586
Xpedition 325	0325	Stock	002	2002	01-0581	01-0524	01-0571		01-0572
Magnum 330 2x4	0330	Stock		2003	01-0581	01-0524	01-0571		01-0572
Magnum 330 4x4	0330	Stock	002	2003	01-0581	01-0524	01-0571		01-0572
Trail Boss 330 2x4	0330	Stock		2003 - 2007	01-0581	01-0524	01-0571		01-0572
Sportsman 335 4x4	0335	Stock	001	1999 - 2000	01-0581	01-0524	01-0571		01-0572
Sportsman 335 4x4	0335	Stock	002	2000	01-0581	01-0524	01-0571		01-0572
Worker 335 4x4	0335	Stock	001	1999	01-0581	01-0524	01-0571		01-0572
350L 2x4	0350	Stock		1993	01-0528		01-2505	01-0391	
350L 4x4	0350	Stock		1993			01-2505		
350L 4x4	0350	Stock	001	1993	01-0528			01-0391	
350L 6x6	0350	Stock		1993			01-2505		
350L 6x6	0350	Stock	001	1993	01-0528			01-0391	
Trail Boss 350L 2x4	0350	Stock		1990 - 1992	01-0528		01-2505	01-0391	
Trail Boss 350L 4x4	0350	Stock	001	1990 - 1992	01-0528		01-2505	01-0391	
400L 2x4	0400	Stock		1994	01-0528		01-2505	01-0391	
400L 4x4	0400	Stock	001	1994	01-0528		01-2505	01-0391	
400L 6x6	0400	Stock	001	1994	01-0528		01-2505	01-0391	
Big Boss 400L 6x6	0400	Stock	001	1995 - 1996	01-0528		01-2505	01-0391	
Scrambler 400 2x4	0400	Stock		2000 - 2002		01-0389	01-0582	01-0393	01-0583
Scrambler 400 4x4	0400	Stock	001	1995 - 1996		01-0389	01-0582		01-0583
Scrambler 400 4x4	0400	Stock	001	1998 - 1999					01-2503
Scrambler 400 4x4	0400	Stock	002	2000		01-0389	01-0582	01-0393	01-0583
Scrambler 400 4x4	0400	Stock	002	2002		01-0389	01-0582	01-0393	01-0583
Scrambler 400L 4x4	0400	Stock	001	1997		01-0389	01-0582		01-0583
Sport 400	0400	Stock		1998					01-2503

Foot Notes - 001 - Requires 4WD switch relocation kit part# 11-0024 [not included],

002 - Requires 4WD switch kit 11-0033 [not included], 006 - Built before 2/10/99, 007 - Built after 2/10/99

CC- Displacement

Twist Throttle Kits

Model	CC	Carb	Foot Note	Model Year	Agri cultural	CR Comp	CR Pro	Turbo	Vortex
Sport 400	0400	Stock		1999		01-0389	01-0582	01-0393	01-0583
Sport 400L	0400	Stock		1994 - 1995	01-0528		01-2505	01-0391	
Sport 400L	0400	Stock		1996 - 1997		01-0389	01-0582		01-0583
Sport 400L 2x4	0400	Stock		1995	01-0528		01-2505	01-0391	
Sportsman 400	0400	Stock	002	2001 - 2004	01-0581	01-0524	01-0571		01-0572
Sportsman 400 4x4	0400	Stock	001	1993 - 1995	01-0528		01-2505	01-0391	
Sportsman 400 4x4	0400	Stock		1996	01-0528		01-2505	01-0391	
Sportsman 400L	0400	Stock	001	1997	01-0528		01-2505	01-0391	
Trail Blazer 400	0400	Stock		2003		01-0389	01-0582	01-0393	01-0583
Xplorer 400 4x4	0400	Stock	001	1995	01-0528		01-2505	01-0391	
Xplorer 400 4x4	0400	Stock	002	1999 - 2002		01-0389	01-0582	01-0393	01-0583
Xplorer 400L 4x4	0400	Stock	001	1996	01-0528		01-2505	01-0391	
Xpress 400L 2x4	0400	Stock		1996 - 1997	01-0528		01-2505	01-0391	
Magnum 425 2x4	0425	Stock		1997	01-0581	01-0524	01-0571		01-0572
Magnum 425 2x4	0425	Stock		1998	01-0584		01-0585		01-0586
Magnum 425 4x4	0425	Stock	001	1997	01-0581	01-0524	01-0571		01-0572
Magnum 425 4x4	0425	Stock	001	1998	01-0584		01-0585		01-0586
Magnum 425 6x6	0425	Stock	001	1997	01-0584		01-0585		01-0586
Xpedition 425	0425	Stock	002	2000 - 2002	01-0581	01-0524	01-0571		01-0572
Sportsman 450	0450	Stock	002	2006 - 2007		01-0524	01-0571		01-0572
Big Boss 500 6x6	0500	Stock	001	1998 - 1999	01-0584		01-0585		01-0586
Big Boss 500 6x6 Norway	0500	Stock	001	1998	01-0584		01-0585		01-0586
Magnum 500	0500	Stock	002	1999	01-0581	01-0524	01-0571		01-0572
Magnum 500	0500	Stock	002	2001 - 2002	01-0581	01-0524	01-0571		01-0572
Magnum 500 2x4	0500	Stock		1995 - 1996	01-0584		01-0585		01-0586
Magnum 500 4x4	0500	Stock	001	1995 - 1996	01-0584		01-0585		01-0586
Magnum 500 4x4 HDS	0500	Stock		2003	01-0581	01-0524	01-0571		01-0572
Magnum 500 6x6	0500	Stock	001	1996	01-0584		01-0585		01-0586
Magnum 500 HDS	0500	Stock		2001	01-0581	01-0524	01-0571		01-0572
Magnum 500 RMK/VL HDS	0500	Stock		2002	01-0581	01-0524	01-0571		01-0572
Magnum 500/EB/4x4 HDS	0500	Stock	002	2000	01-0581	01-0524	01-0571		01-0572
Outlaw 500	0500	Stock		2006 - 2007		01-0524	01-0571		01-0572
Predator 500	0500	Stock		2003 - 2007		01-0524	01-0571		01-0572
Predator 500LE	0500	Stock		2007		01-0524	01-0571		01-0572
Scrambler 500 2x4	0500	Stock		2001 - 2002		01-0524	01-0571		01-0572
Scrambler 500 4x4	0500	Stock	001	1997	01-0581	01-0524	01-0571		01-0572
Scrambler 500 4x4	0500	Stock	002	1999 - 2000	01-0581	01-0524	01-0571		01-0572
Scrambler 500 4x4	0500	Stock	002	2001 - 2005		01-0524	01-0571		01-0572
Sportsman 500 4x4	0500	Stock	001	1996	01-0581		01-0571		01-0572
Sportsman 500 4x4	0500	Stock	001	1997 - 1998	01-0581	01-0524	01-0571		01-0572
Sportsman 500 4x4	0500	Stock	002	1999 - 2000	01-0581	01-0524	01-0571		01-0572
Sportsman 500 4x4	0500	Stock	002	2002	01-0581	01-0524	01-0571		01-0572
Sportsman 500 6x6	0500	Stock	002	2000 - 2005	01-0581	01-0524	01-0571		01-0572
Sportsman 500 EFI	0500	Stock	053	2006			01-2588		
Sportsman 500 EFI	0500	Stock	054	2006 - 2007			01-2586		01-2587
Sportsman 500 HO	0500	Stock	002	2001	01-0581	01-0524	01-0571		01-0572
Sportsman 500 HO	0500	Stock	002	2003 - 2004	01-0581	01-0524	01-0571		01-0572
Sportsman 500 RSE	0500	Stock	002	1999	01-0581	01-0524	01-0571		01-0572
Worker 500 4x4	0500	Stock	002	1999	01-0581	01-0524	01-0571		01-0572
Worker 500 4x4	0500	Stock	002	2001 - 2002	01-0581	01-0524	01-0571		01-0572
Xplorer 500 4x4	0500	Stock		1997	01-0581	01-0524	01-0571		01-0572
Outlaw 525	0510	Stock		2007			01-2591	01-2592	01-2593
Sportsman 600	0600	Stock	002	2003 - 2004	01-0581	01-0524	01-0571		01-0572
Sportsman 700	0700	Stock	002	2002 - 2005	01-0581	01-0524	01-0571		01-0572
Sportsman 700 EFI	0700	Stock	002	2004 - 2007			01-2578		
Sportsman 800 EFI	0800	Stock	002	2005 - 2007			01-2578		

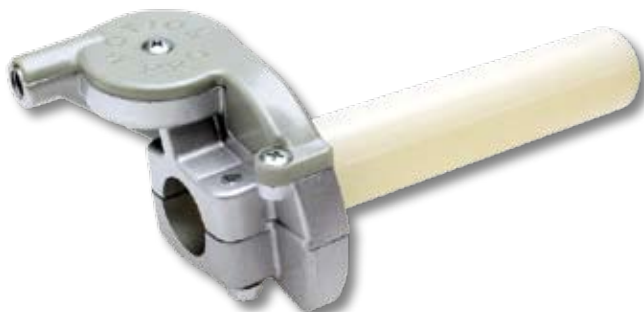
Foot Notes - **001** - Requires 4WD switch relocation kit part# 11-0024 (not included),
002 - Requires 4WD switch kit 11-0033 (not included), **053** - For 2006 Polaris Sportsman 500 EFI built before 01/16/06,
054 - For 2006-2007 Polaris Sportsman 500 EFI built after 01/16/06

CC- Displacement

Cables for Vortex™ Throttle

Model	CC	Carb	Foot Note	Model Year	BV Throttle Cable
250 4x4	0250	Stock		1993	01-1003
Big Boss 250 4x6	0250	Stock		1989	01-1003
Big Boss 250 6x6	0250	Stock		1991 - 1993	01-1003
Trail Blazer 250	0250	Stock		1990 - 1995	01-1003
Trail Blazer 250	0250	Stock		1998 - 2006	01-1003
Trail Blazer 250ES	0250	Stock		1995 - 1997	01-1003
Trail Boss 250	0250	Stock		1990 - 1992	01-1003
Trail Boss 250	0250	Stock		1995 - 1999	01-1003
Trail Boss 250 2x4	0250	Stock		1989 - 1992	01-1003
Trail Boss 250 4x4	0250	Stock		1989 - 1992	01-1003
Xplorer 250 4x4	0250	Stock		2000 - 2002	01-1003
300 4x4	0300	Stock		1994	01-1003
300 6x6	0300	Stock		1994	01-1003
Trail Boss 300 2x4	0300	Stock		1993 - 1995	01-1003
Trail Boss 330 2x4	0300	Stock		2003 - 2007	01-0747
Xplorer 300 4x4	0300	Stock		1996 - 1999	01-1003
Xpress 300 2x4	0300	Stock		1996 - 1999	01-1003
Magnum 325 2x4	0325	Stock		2001	01-1008
Magnum 325 2x4	0325	Stock		2002	01-0747
Magnum 325 2x4 HDS	0325	Stock	006	2000	01-0747
Magnum 325 2x4 HDS	0325	Stock	007	2000	01-1008
Magnum 325 2x4 HDS	0325	Stock		2001	01-1008
Magnum 325 4x4	0325	Stock	006	2000	01-0747
Magnum 325 4x4	0325	Stock	007	2000	01-1008
Magnum 325 4x4	0325	Stock		2001 - 2002	01-1008
Magnum 325 4x4 HDS	0325	Stock	006	2000	01-0747
Magnum 325 4x4 HDS	0325	Stock	007	2000	01-1008
Magnum 325 4x4 HDS	0325	Stock		2001 - 2002	01-0747
Trail Boss 325	0325	Stock		2000 - 2001	01-1008
Trail Boss 325	0325	Stock		2002	01-0747
Trail Boss 325 SE 2x4	0325	Stock		2001	01-1008
Xpedition 325	0325	Stock		2000 - 2001	01-1008
Xpedition 325	0325	Stock		2002	01-0747
Magnum 330 2x4	0330	Stock		2003	01-0747
Magnum 330 4x4	0330	Stock		2003	01-0747
Sportsman 335 4x4	0335	Stock		1999 - 2000	01-0747
Worker 335 4x4	0335	Stock		1999	01-0747
350L 2x4	0350	Stock		1993	01-1004
350L 4x4	0350	Stock		1993	01-1004
350L 6x6	0350	Stock		1993	01-1004
Trail Boss 350L 2x4	0350	Stock		1990 - 1992	01-1004
Trail Boss 350L 4x4	0350	Stock		1990 - 1992	01-1004
400L 2x4	0400	Stock		1994	01-1004
400L 4x4	0400	Stock		1994	01-1004
400L 6x6	0400	Stock		1994	01-1004
Big Boss 400L 6x6	0400	Stock		1995 - 1996	01-1004
Scrambler 400 2x4	0400	Stock		2000 - 2002	01-1005
Scrambler 400 4x4	0400	Stock		1995 - 1996	01-1005
Scrambler 400 4x4	0400	Stock		1998 - 1999	01-1009
Scrambler 400 4x4	0400	Stock		2000	01-1005

Model	CC	Carb	Foot Note	Model Year	BV Throttle Cable
Scrambler 400 4x4	0400	Stock		2002	01-1005
Scrambler 400L 4x4	0400	Stock		1997	01-1005
Sport 400	0400	Stock		1998	01-1009
Sport 400	0400	Stock		1999	01-1005
Sport 400L	0400	Stock		1994 - 1995	01-1004
Sport 400L	0400	Stock		1996 - 1997	01-1005
Sport 400L 2x4	0400	Stock		1995	01-1004
Sportsman 400	0400	Stock		2001 - 2004	01-0747
Sportsman 400 4x4	0400	Stock		1993 - 1996	01-1004
Sportsman 400L	0400	Stock		1997	01-1004
Trail Blazer 400	0400	Stock		2003	01-1005
Xplorer 400 4x4	0400	Stock		1995	01-1004
Xplorer 400 4x4	0400	Stock		1999 - 2002	01-1005
Xplorer 400L 4x4	0400	Stock		1996	01-1004
Xpress 400L 2x4	0400	Stock		1996 - 1997	01-1004
Magnum 425 2x4	0425	Stock		1997	01-0747
Magnum 425 2x4	0425	Stock		1998	01-1008
Magnum 425 4x4	0425	Stock		1997	01-0747
Magnum 425 4x4	0425	Stock		1998	01-1008
Magnum 425 6x6	0425	Stock		1997	01-1008
Xpedition 425	0425	Stock		2000 - 2002	01-0747
Sportsman 450	0450	Stock		2006 - 2007	01-0747
Big Boss 500 6x6	0500	Stock		1998 - 1999	01-1008
Magnum 500	0500	Stock		1999	01-0747
Magnum 500	0500	Stock		2001 - 2002	01-0747
Magnum 500 2x4	0500	Stock		1995 - 1996	01-1008
Magnum 500 4x4	0500	Stock		1995 - 1996	01-1008
Magnum 500 4x4 HDS	0500	Stock		2003	01-0747
Magnum 500 6x6	0500	Stock		1996	01-1008
Magnum 500 HDS	0500	Stock		2001	01-0747
Magnum 500 RMK/VL HDS	0500	Stock		2002	01-0747
Magnum 500/EB/4x4 HDS	0500	Stock		2000	01-0747
Predator 500	0500	Stock		2003 - 2007	01-0747
Predator 500LE	0500	Stock		2007	01-0747
Scrambler 500 2x4	0500	Stock		2001 - 2002	01-0747
Scrambler 500 4x4	0500	Stock		1997	01-0747
Scrambler 500 4x4	0500	Stock		1999 - 2005	01-0747
Sportsman 500 4x4	0500	Stock		1996 - 2000	01-0747
Sportsman 500 4x4	0500	Stock		2002	01-0747
Sportsman 500 6x6	0500	Stock		2000 - 2005	01-0747
Sportsman 500 EFI	0500	Stock	054	2006 - 2007	01-1051
Sportsman 500 HO	0500	Stock		2001	01-0747
Sportsman 500 HO	0500	Stock		2003 - 2004	01-0747
Sportsman 500 RSE	0500	Stock		1999	01-0747
Worker 500 4x4	0500	Stock		1999	01-0747
Worker 500 4x4	0500	Stock		2001 - 2002	01-0747
Xplorer 500 4x4	0500	Stock		1997	01-0747
Outlaw 525	0510	Stock		2007	01-1058
Sportsman 600	0600	Stock		2003 - 2004	01-0747
Sportsman 700	0700	Stock		2002 - 2005	01-0747



Vortex™ Throttle 01-0054

Included:
Rubber Mud Cover
for Vortex Throttle



Foot Notes - **006** - Built before 2/10/99, **007** - Built after 2/10/99, **054** - For 2006-2007 Polaris Sportsman 500 EFI built after 01/16/06

CC- Displacement, BV- Black Vinyl

Cables for Turbo™ Throttle

Model	CC	Carb	Model Year	BV Throttle Cable
250 4x4	0250	Stock	1993	01-0689
Big Boss 250 4x6	0250	Stock	1989	01-0689
Big Boss 250 6x6	0250	Stock	1991 - 1993	01-0689
Trail Blazer 250	0250	Stock	1989 - 1995	01-0689
Trail Blazer 250	0250	Stock	1998 - 2006	01-0689
Trail Blazer 250ES	0250	Stock	1996 - 1997	01-0689
Trail Boss 250	0250	Stock	1990 - 1992	01-0689
Trail Boss 250	0250	Stock	1995 - 1999	01-0689
Trail Boss 250 2x4	0250	Stock	1989	01-0689
Trail Boss 250 2x4	0250	Stock	1991 - 1992	01-0689
Trail Boss 250 4x4	0250	Stock	1989 - 1992	01-0689
Xplorer 250 4x4	0250	Stock	2000 - 2002	01-0689
300 4x4	0300	Stock	1994	01-0689
Trail Boss 300 2x4	0300	Stock	1993 - 1995	01-0689
Xplorer 300 4x4	0300	Stock	1996 - 1999	01-0689
Xpress 300 2x4	0300	Stock	1996 - 1999	01-0689
350L 2x4	0350	Stock	1993	01-0688
350L 4x4	0350	Stock	1993	01-0688
350L 6x6	0350	Stock	1993	01-0688
Trail Boss 350L 2x4	0350	Stock	1990 - 1992	01-0688
Trail Boss 350L 4x4	0350	Stock	1990 - 1992	01-0688
400L 2x4	0400	Stock	1994	01-0688
400L 4x4	0400	Stock	1994	01-0688
400L 6x6	0400	Stock	1994	01-0688
Big Boss 400L 6x6	0400	Stock	1995 - 1996	01-0688
Sport 400	0400	Stock	1999	01-0688
Sport 400L	0400	Stock	1994 - 1995	01-0688
Sport 400L 2x4	0400	Stock	1995	01-0688
Sportsman 400 4x4	0400	Stock	1993 - 1996	01-0688
Sportsman 400L	0400	Stock	1997	01-0688
Xplorer 400 4x4	0400	Stock	1995	01-0688
Xplorer 400L 4x4	0400	Stock	1996	01-0688
Xpress 400L 2x4	0400	Stock	1996 - 1997	01-0688
Outlaw 525	0510	Stock	2007	01-1057



Turbo™ Throttle
01-0057

Cables for CR-Comp, CR-Pro and Agricultural (Ag) Throttles

Model	CC	Carb	Foot Note	Model Year	BV Throttle Cable
250 4x4	0250	Stock		1993	01-0826
Big Boss 250 4x6	0250	Stock		1989	01-0826
Big Boss 250 6x6	0250	Stock		1991 - 1993	01-0826
Trail Blazer 250	0250	Stock		1990 - 1995	01-0826
Trail Blazer 250	0250	Stock		1998 - 2000	01-0826
Trail Blazer 250	0250	Stock		2002 - 2006	01-0826
Trail Blazer 250ES	0250	Stock		1996 - 1997	01-0826
Trail Boss 250	0250	Stock		1990 - 1992	01-0826
Trail Boss 250	0250	Stock		1995	01-0826
Trail Boss 250	0250	Stock		1997 - 1999	01-0826
Trail Boss 250 2x4	0250	Stock		1989 - 1992	01-0826
Trail Boss 250 4x4	0250	Stock		1989 - 1992	01-0826
Xplorer 250 4x4	0250	Stock		2000 - 2002	01-0826
300 4x4	0300	Stock		1994	01-0826
300 6x6	0300	Stock		1994	01-0826
Trail Boss 300 2x4	0300	Stock		1993 - 1995	01-0826
Xplorer 300 4x4	0300	Stock		1996 - 1999	01-0826
Xpress 300 2x4	0300	Stock		1996 - 1999	01-0826
Magnum 325 2x4	0325	Stock		2001	01-1007
Magnum 325 2x4	0325	Stock		2002	01-0746
Magnum 325 2x4 HDS	0325	Stock	006	2000	01-0746
Magnum 325 2x4 HDS	0325	Stock	007	2000	01-1007
Magnum 325 2x4 HDS	0325	Stock		2001	01-1007
Magnum 325 4x4	0325	Stock	006	2000	01-0746
Magnum 325 4x4	0325	Stock	007	2000	01-1007
Magnum 325 4x4	0325	Stock		2001 - 2002	01-1007
Magnum 325 4x4 HDS	0325	Stock	006	2000	01-0746
Magnum 325 4x4 HDS	0325	Stock	007	2000	01-1007
Magnum 325 4x4 HDS	0325	Stock		2001 - 2002	01-0746
Trail Boss 325	0325	Stock		2000 - 2001	01-1007
Trail Boss 325	0325	Stock		2002	01-0746
Trail Boss 325 SE 2x4	0325	Stock		2001	01-1007
Xpedition 325	0325	Stock		2000 - 2001	01-1007
Xpedition 325	0325	Stock		2002	01-0746
Magnum 330 2x4	0330	Stock		2003	01-0746
Magnum 330 4x4	0330	Stock		2002	01-0741
Magnum 330 4x4	0330	Stock		2003	01-0746
Trail Boss 330 2x4	0330	Stock		2003 - 2007	01-0746
Sportsman 335 4x4	0335	Stock		1999 - 2000	01-0746
Worker 335 4x4	0335	Stock		1999	01-0746
350L 2x4	0350	Stock		1993	01-0824
350L 4x4	0350	Stock		1993	01-0824
350L 6x6	0350	Stock		1993	01-0824
Trail Boss 350L 2x4	0350	Stock		1990 - 1992	01-0824
Trail Boss 350L 4x4	0350	Stock		1990 - 1992	01-0824
400L 2x4	0400	Stock		1994	01-0824
400L 4x4	0400	Stock		1994	01-0824
400L 6x6	0400	Stock		1994	01-0824
Big Boss 400L 6x6	0400	Stock		1995 - 1996	01-0824
Scrambler 400 2x4	0400	Stock		2000 - 2002	01-1006
Scrambler 400 4x4	0400	Stock		1995 - 1996	01-1006
Scrambler 400 4x4	0400	Stock		2000	01-1006

Model	CC	Carb	Foot Note	Model Year	BV Throttle Cable
Scrambler 400 4x4	0400	Stock		2002	01-1006
Scrambler 400L 4x4	0400	Stock		1997	01-1006
Sport 400	0400	Stock		1999	01-1006
Sport 400L	0400	Stock		1994 - 1995	01-0824
Sport 400L	0400	Stock		1996 - 1997	01-1006
Sport 400L 2x4	0400	Stock		1995	01-0824
Sportsman 400	0400	Stock		2001 - 2004	01-0746
Sportsman 400 4x4	0400	Stock		1993 - 1996	01-0824
Sportsman 400L	0400	Stock		1997	01-0824
Trail Blazer 400	0400	Stock		2003	01-1006
Xplorer 400 4x4	0400	Stock		1995	01-0824
Xplorer 400 4x4	0400	Stock		1999 - 2002	01-1006
Xplorer 400L 4x4	0400	Stock		1996	01-0824
Xpress 400L 2x4	0400	Stock		1996 - 1997	01-0824
Magnum 425 2x4	0425	Stock		1997	01-0746
Magnum 425 2x4	0425	Stock		1998	01-1007
Magnum 425 4x4	0425	Stock		1997	01-0746
Magnum 425 4x4	0425	Stock		1998	01-1007
Magnum 425 6x6	0425	Stock		1997	01-1007
Xpedition 425	0425	Stock		2000 - 2002	01-0746
Sportsman 450	0450	Stock		2006 - 2007	01-0746
Big Boss 500 6x6	0500	Stock		1998 - 1999	01-1007
Magnum 500	0500	Stock		1999	01-0746
Magnum 500	0500	Stock		2001 - 2002	01-0746
Magnum 500 2x4	0500	Stock		1995 - 1996	01-1007
Magnum 500 4x4	0500	Stock		1995 - 1996	01-1007
Magnum 500 4x4 HDS	0500	Stock		2003	01-0746
Magnum 500 6x6	0500	Stock		1996	01-1007
Magnum 500 HDS	0500	Stock		2001	01-0746
Magnum 500 RMK/VL HDS	0500	Stock		2002	01-0746
Magnum 500/EB/4x4 HDS	0500	Stock		2000	01-0746
Predator 500	0500	Stock		2003 - 2007	01-0746
Predator 500LE	0500	Stock		2007	01-0746
Scrambler 500 2x4	0500	Stock		2001 - 2002	01-0746
Scrambler 500 4x4	0500	Stock		1997	01-0746
Scrambler 500 4x4	0500	Stock		1999 - 2005	01-0746
Sportsman 500 4x4	0500	Stock		1996 - 2000	01-0746
Sportsman 500 4x4	0500	Stock		2002	01-0746
Sportsman 500 6x6	0500	Stock		2000 - 2005	01-0746
Sportsman 500 EFI	0500	Stock	053	2006	01-1052
Sportsman 500 EFI	0500	Stock	054	2006 - 2007	01-1050
Sportsman 500 HO	0500	Stock		2001	01-0746
Sportsman 500 HO	0500	Stock		2003 - 2004	01-0746
Sportsman 500 RSE	0500	Stock		1999	01-0746
Worker 500 4x4	0500	Stock		1999	01-0746
Worker 500 4x4	0500	Stock		2001 - 2002	01-0746
Xplorer 500 4x4	0500	Stock		1997	01-0746
Outlaw 525	0510	Std		2007	01-1056
Sportsman 600	0600	Stock		2003 - 2004	01-0746
Sportsman 700	0700	Stock		2002 - 2005	01-0746
Sportsman 700 EFI	0700	Stock	002	2004 - 2007	01-1018
Sportsman 800 EFI	0800	Stock	002	2005 - 2007	01-1018

Foot Notes - **002** - Requires 4WD switch kit 11-0033 (not included), **006** - Built before 2/10/99,
007 - Built after 2/10/99, **053** - For 2006 Polaris Sportsman 500 EFI built before 01/16/06,
054 - For 2006-2007 Polaris Sportsman 500 EFI built after 01/16/06

CC- Displacement, BV- Black Vinyl

What's in a Name ?

Name	Model No.	(CC)	Vehicle Type
ATP	ATP 330 4X4	0330	ATV
ATP	ATP 500 4X4	0500	ATV
Big Boss	Big Boss 250 4x6	0250	ATV
Big Boss	Big Boss 250 6x6	0250	ATV
Big Boss	Big Boss 400L 6x6	0400	ATV
Big Boss	Big Boss 400L 6x6 Norway	0400	ATV
Big Boss	Big Boss 500 6x6	0500	ATV
Big Boss	Big Boss 500 6x6 International	0500	ATV
Big Boss	Big Boss 500 6x6 Norway	0500	ATV
Big Boss	Big Boss 500 6x6 Sweden	0500	ATV
Big Boss 300 6x6	300 6x6	0300	ATV
Big Boss 350L 6x6	350L 6x6	0350	ATV
Big Boss 400L 6x6	400L 6x6	0400	ATV
CA Classic Cruiser	Victory CA Classic Cruiser	1634	Cruiser
CA Kingpin	Victory CA Kingpin	1634	Cruiser
CA Touring Cruiser	Victory CA Touring Cruiser	1634	Cruiser
Deluxe Cruiser	Victory Deluxe Cruiser	1634	Cruiser
Deluxe Touring Cruiser	Victory Deluxe Touring Cruiser	1634	Cruiser
Hammer	Victory Hammer	1634	Cruiser
Hammer S	Victory Hammer S	1634	Cruiser
Hawkeye 300 2x4	Hawkeye 300 2x4	0300	ATV
Hawkeye 300 4x4	Hawkeye 300 4x4	0300	ATV
Kingpin	Victory Kingpin	1634	Cruiser
Kingpin Tour	Victory Kingpin Tour	1634	Cruiser
Kingpin/Ness	Victory Kingpin/Ness	1634	Cruiser
Magnum	Magnum 325 2x4	0325	ATV
Magnum	Magnum 325 2x4 HDS	0325	ATV
Magnum	Magnum 325 4x4	0325	ATV
Magnum	Magnum 325 4x4 HDS	0325	ATV
Magnum	Magnum 330 2x4	0330	ATV
Magnum	Magnum 330 4x4	0330	ATV
Magnum	Magnum 425 2x4	0425	ATV
Magnum	Magnum 425 4x4	0425	ATV
Magnum	Magnum 425 4x4 Norway	0425	ATV
Magnum	Magnum 425 4x4 Sweden	0425	ATV
Magnum	Magnum 425 6x6	0425	ATV
Magnum	Magnum 6x6 Sweden	0425	ATV
Magnum	Magnum 500	0500	ATV
Magnum	Magnum 500 2x4	0500	ATV
Magnum	Magnum 500 4x4	0500	ATV
Magnum	Magnum 500 4x4 HDS	0500	ATV
Magnum	Magnum 500 4x4 Sweden	0500	ATV
Magnum	Magnum 500 6x6	0500	ATV
Magnum	Magnum 500 6x6 Sweden	0500	ATV
Magnum	Magnum 500 HDS	0500	ATV
Magnum	Magnum 500 RMK/VL HDS	0500	ATV
Magnum	Magnum 500/EB/4x4 HDS	0500	ATV
Outlaw	Outlaw 500	0500	ATV
Outlaw 525 KTM Powered	Outlaw 525	0510	ATV
Predator	Predator 500	0500	ATV
Predator	Predator 500LE	0500	ATV
Scrambler	Scrambler 400 2x4	0400	ATV
Scrambler	Scrambler 400 4x4	0400	ATV
Scrambler	Scrambler 400L 4X4	0400	ATV
Scrambler	Scrambler 500 2x4	0500	ATV

Name	Model No.	(CC)	Vehicle Type
Scrambler	Scrambler 500 4X4	0500	ATV
Sport	Sport 400	0400	ATV
Sport	Sport 400L	0400	ATV
Sport	Sport 400L 2x4	0400	ATV
Sport Cruiser	Victory Sport Cruiser	1634	Cruiser
Sportsman	Sportsman 335 4X4	0335	ATV
Sportsman	Sportsman 400	0400	ATV
Sportsman	Sportsman 400 4x4	0400	ATV
Sportsman	Sportsman 400L	0400	ATV
Sportsman	Sportsman 450	0450	ATV
Sportsman	Sportsman 500 4X4	0500	ATV
Sportsman	Sportsman 500 6x6	0500	ATV
Sportsman	Sportsman 500 HO	0500	ATV
Sportsman	Sportsman 500 RSE	0500	ATV
Sportsman	Sportsman MV7	0700	ATV
Sportsman	Sportsman 800 EFI	0800	ATV
Sportsman 500	Sportsman 500 EFI	0500	ATV
Sportsman 500	Sportsman 500 Sweden	0500	ATV
Sportsman X2	Sportsman 500 EFI X2	0500	ATV
Standard Cruiser	Victory Standard Cruiser	1634	Cruiser
Touring Cruiser	Victory Touring Cruiser	1634	Cruiser
Trail Blazer	Trail Blazer 250	0250	ATV
Trail Blazer	Trail Blazer 250ES	0250	ATV
Trail Blazer	Trail Blazer 400	0400	ATV
Trail Boss	Trail Boss 250	0250	ATV
Trail Boss	Trail Boss 250 2x4	0250	ATV
Trail Boss	Trail Boss 250 4x4	0250	ATV
Trail Boss	Trail Boss 300 2x4	0300	ATV
Trail Boss	Trail Boss 325	0325	ATV
Trail Boss	Trail Boss 325 SE 2X4	0325	ATV
Trail Boss	Trail Boss 330 2X4	0330	ATV
Trail Boss	Trail Boss 350L 2x4	0350	ATV
Trail Boss	Trail Boss 350L 4x4	0350	ATV
Trail Boss 250 4x4	250 4x4	0250	ATV
Trail Boss 300 4x4	300 4x4	0300	ATV
Trail Boss 350L 2x4	350L 2x4	0350	ATV
Trail Boss 350L 4x4	350L 4x4	0350	ATV
Twin	Sportsman 600	0600	ATV
Twin	Sportsman 700	0700	ATV
Twin EFI	Sportsman 700 EFI	0700	ATV
Vegas	Victory Vegas	1634	Cruiser
Vegas 8-Ball	Victory Vegas 8-Ball	1634	Cruiser
Vegas Jackpot	Victory Vegas Jackpot	1634	Cruiser
Vegas Jackpot/Ness	Victory Vegas Jackpot/Ness	1634	Cruiser
Worker	Worker 335 4X4	0335	ATV
Worker	Worker 500 4X4	0500	ATV
Xpedition	Xpedition 325	0325	ATV
Xpedition	Xpedition 425	0425	ATV
Xplorer	Xplorer 250 4x4	0250	ATV
Xplorer	Xplorer 300 4X4	0300	ATV
Xplorer	Xplorer 400 4x4	0400	ATV
Xplorer	Xplorer 400L 4X4	0400	ATV
Xplorer	Xplorer 500 4X4	0500	ATV
Xpress	Xpress 300 2X4	0300	ATV
Xpress	Xpress 400L 2X4	0400	ATV